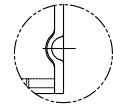
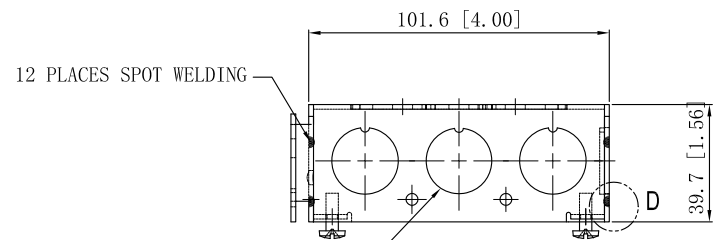
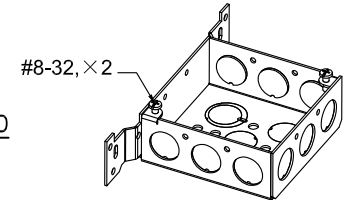


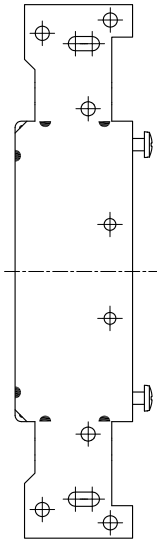
SIDES	BOTTOM
9 1/2" KNOCKOUTS	3 1/2" KNOCKOUTS
	2 1/2"-3/4" MOON KNOCKOUTS
2 PCS 8-32X1/2 Screws Installed	
Material:Steel-0.0625"-G60 Galvanized	



WELDING STYLE DETAIL VIEW D



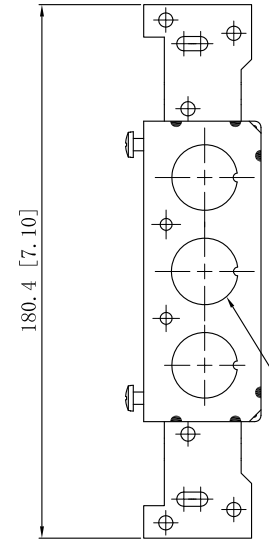
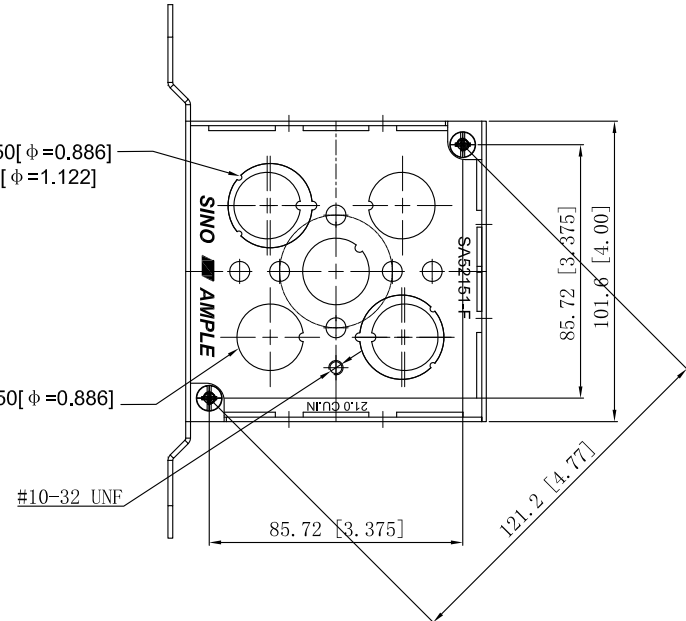
6 1/2"KNOCKOUTS $\phi=22.50[\phi=0.886]$ MIRROR



2 1/2"-3/4" MOON KNOCKOUTS $\phi=22.50[\phi=0.886]$
 $\phi=28.50[\phi=1.122]$

3 1/2"KNOCKOUTS $\phi=22.50[\phi=0.886]$

#10-32 UNF



3 1/2" KNOCKOUTS $\phi=22.50[\phi=0.886]$

This data sheet is for reference only .SINO AMPLE reserves the right to make changes to the design without prior notice.

DESCRIPTION
TRADE REFERENCE TERMS

STANDARD PACKING
25 PCS

ZHUJI SINO AMPLE METAL PRODUCTS CO., LTD.		
TITLE 4"SQ. BRACKET BOXES (1-1/2"DEEP)		
SIZE A4	DWG NO. SA52151-F	REV A
DATA SHEET		