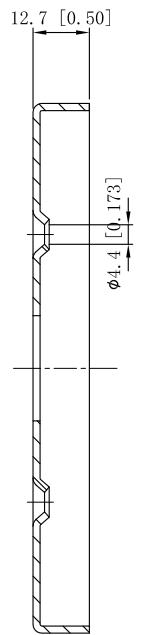
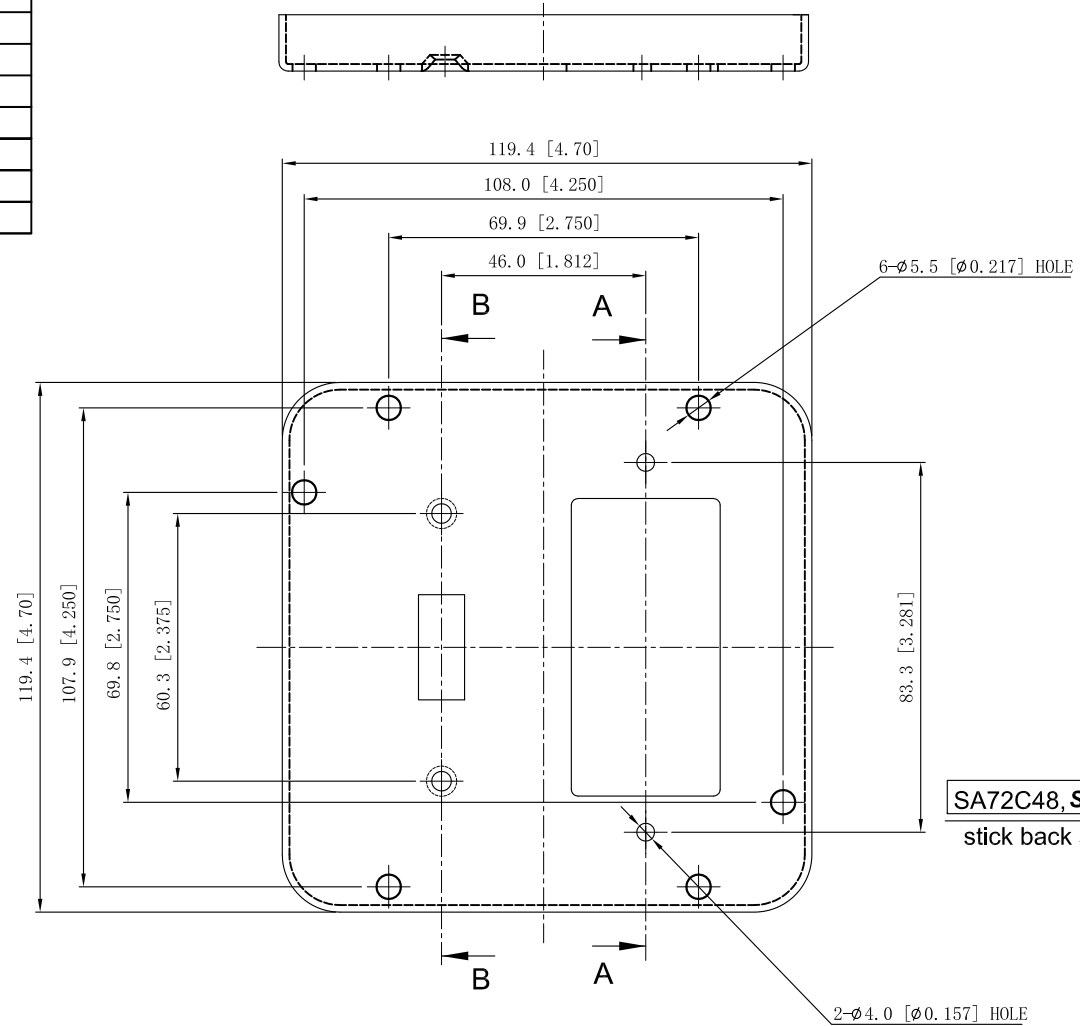


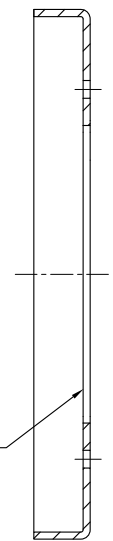
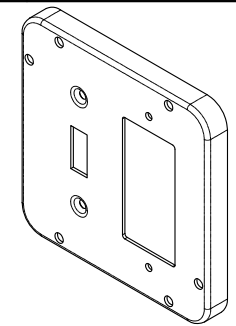
| | |
|---|--------|
| SIDES | BOTTOM |
| | |
| | |
| | |
| 4 PCS 6-32×5/16 Screws Pack In Poly-bag Sepwrtely | |
| 4 PCS 8-32×1 Screws Pack In Poly-bag Sepwrtely | |
| 2 PCS 6-32 Nut Pack In Poly-bag Sepwrtely | |
| Material:Steel-0.0625"-G60 Galvanized | |



CUTAWAY VIEW B-B



SA72C48, SINO AMPLE, 7.0 CU.IN. stick back side



CUTAWAY VIEW A-A

This data sheet is for reference only .SINO AMPLE reserves the right to make changes to the design without prior notice.

| |
|-----------------------|
| DESCRIPTION |
| |
| TRADE REFERENCE TERMS |
| |

| | | | |
|------------------|---|------------|-----|
| STANDARD PACKING | ZHUJI SINO AMPLE METAL PRODUCTS CO., LTD. | | |
| 25 PCS | TITLE | | REV |
| | 4-11/16" INDUSTRIAL "GARVIN" COVERS | | A |
| SIZE | DWG NO. | SA72C48 | |
| A4 | | DATA SHEET | |