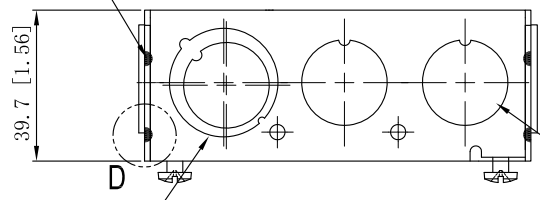


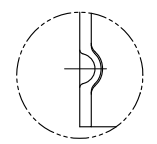
SIDES	BOTTOM
8 1/2" KNOCKOUTS	
4 1/2"-3/4" MOON KNOCKOUTS	
2 PCS 8-32x1/2 Screws Installed	
Material: Steel-0.0625"-G60 Galvanized	

12 PLACES SPOT WELDING

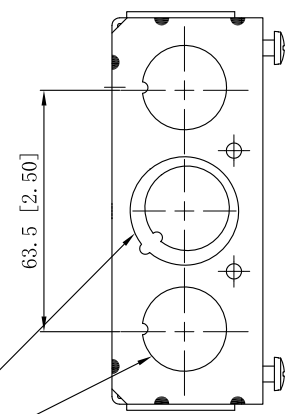


4 1/2" KNOCKOUTS $\phi=22.50$ [$\phi=0.886$] MIRROR

2 1/2"-3/4" MOON KNOCKOUTS $\phi=22.50$ [$\phi=0.886$]
 $\phi=28.50$ [$\phi=1.122$] MIRROR

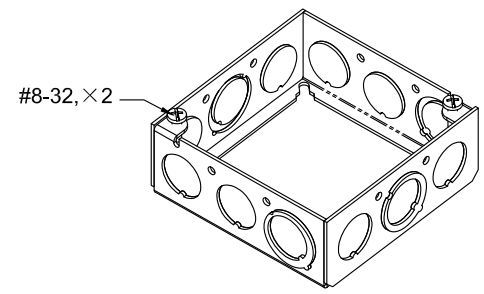
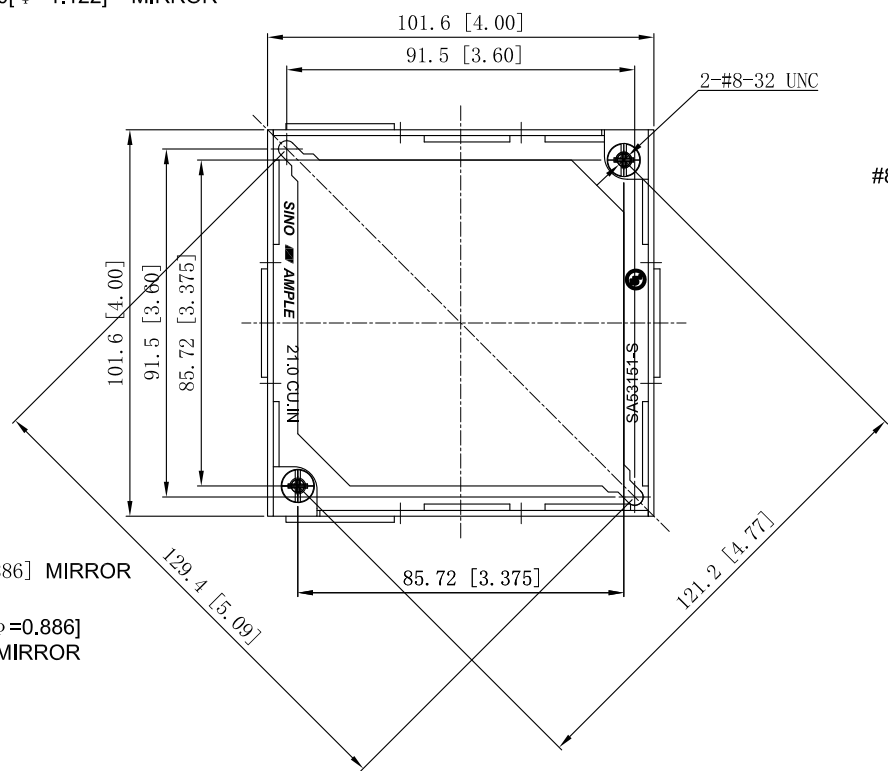


WELDING STYLE DETAIL VIEW D



4 1/2" KNOCKOUTS $\phi=22.50$ [$\phi=0.886$] MIRROR

2 1/2"-3/4" MOON KNOCKOUTS $\phi=22.50$ [$\phi=0.886$]
 $\phi=28.50$ [$\phi=1.122$] MIRROR



#8-32, x2

This data sheet is for reference only. SINO AMPLE reserves the right to make changes to the design without prior notice.

DESCRIPTION
TRADE REFERENCE TERMS

STANDARD PACKING
50 PCS

ZHUJI SINO AMPLE METAL PRODUCTS CO., LTD.	
TITLE 4" SQUARE EXTENSION RINGS 1-1/2" DEEP	
SIZE A4	DWG NO. SA53151-RED
DATA SHEET	
REV A	