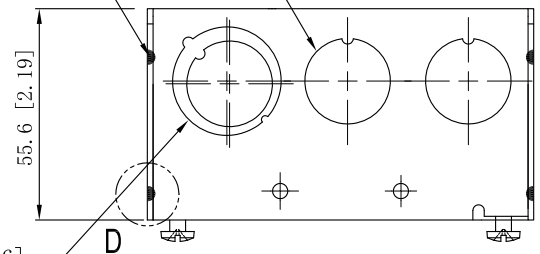


SIDES	BOTTOM
8 1/2" KNOCKOUTS	
4 1/2"-3/4" MOON KNOCKOUTS	
2 PCS 8-32x1/2 Screws Installed	
Material: Steel-0.0625"-G60 Galvanized	

4 1/2" KNOCKOUTS $\phi=22.50$ [$\phi=0.886$]

12 PLACES SPOT WELDING



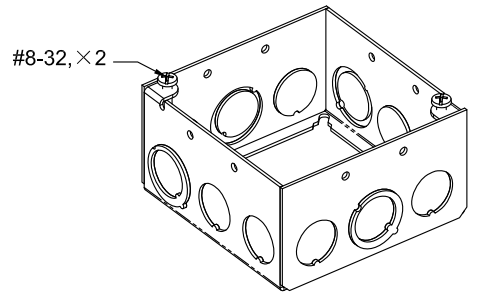
2 1/2"-3/4" MOON KNOCKOUTS $\phi=22.50$ [$\phi=0.886$]
 $\phi=28.50$ [$\phi=1.122$]

D

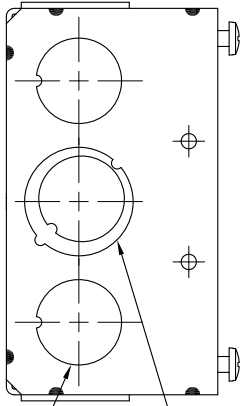
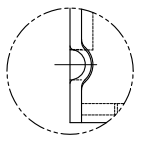
101.6 [4.00]

91.5 [3.60]

2-#8-32 UNC



WELDING STYLE DETAIL VIEW D



101.6 [4.00]

91.5 [3.60]

85.72 [3.375]

SINO AMPLE
3070 CUIJIN

SA53171-S

85.72 [3.375]

129.4 [5.09]

121.2 [4.77]

4 1/2" KNOCKOUTS $\phi=22.50$ [$\phi=0.886$]

2 1/2"-3/4" MOON KNOCKOUTS $\phi=22.50$ [$\phi=0.886$]
 $\phi=28.50$ [$\phi=1.122$]

This data sheet is for reference only. SINO AMPLE reserves the right to make changes to the design without prior notice.

DESCRIPTION
TRADE REFERENCE TERMS

STANDARD PACKING
25 PCS

ZHUJI SINO AMPLE METAL PRODUCTS CO., LTD.		
TITLE 4" SQUARE BOXES 2-1/8" DEEP		
SIZE A4	DWG NO. SA53171-S	REV A
DATA SHEET		