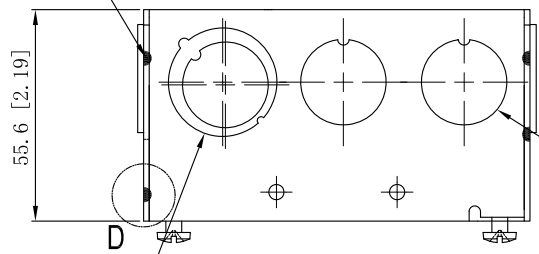


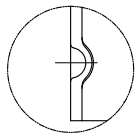
SIDES	BOTTOM
8 1/2" KNOCKOUTS	
4 1/2"-3/4" MOON KNOCKOUTS	
2 PCS 8-32x1/2 Screws Installed	
Material:Steel-0.0625"-G60 Galvanized	

12 PLACES SPOT WELDING

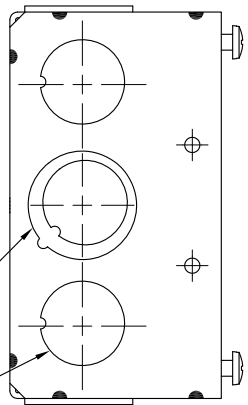


4 1/2" KNOCKOUTS $\phi=22.50$ [$\phi=0.886$] MIRROR

2 1/2"-3/4" MOON KNOCKOUTS $\phi=22.50$ [$\phi=0.886$]
 $\phi=28.50$ [$\phi=1.122$] MIRROR

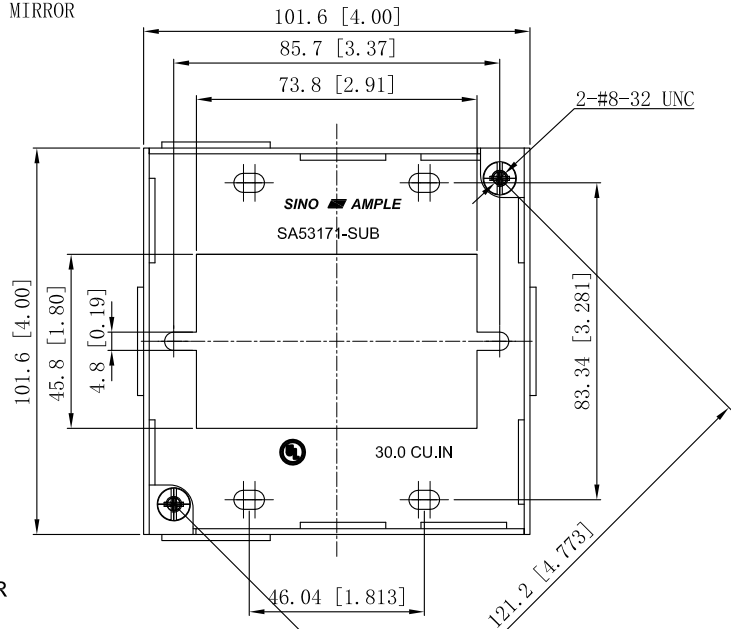


WELDING STYLE DETAIL VIEW D

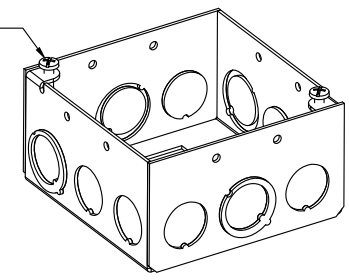


4 1/2" KNOCKOUTS $\phi=22.50$ [$\phi=0.886$] MIRROR

2 1/2"-3/4" MOON KNOCKOUTS $\phi=22.50$ [$\phi=0.886$]
 $\phi=28.50$ [$\phi=1.122$] MIRROR



#8-32, x2



This data sheet is for reference only. SINO AMPLE reserves the right to make changes to the design without prior notice.

DESCRIPTION
TRADE REFERENCE TERMS

STANDARD PACKING
25 PCS

TITLE		ZHUJI SINO AMPLE METAL PRODUCTS CO., LTD.	
		4" SQUARE BOXES 2-1/8" DEEP	
SIZE	DWG NO.	SA53171-SUB	REV
A4			A
DATA SHEET			