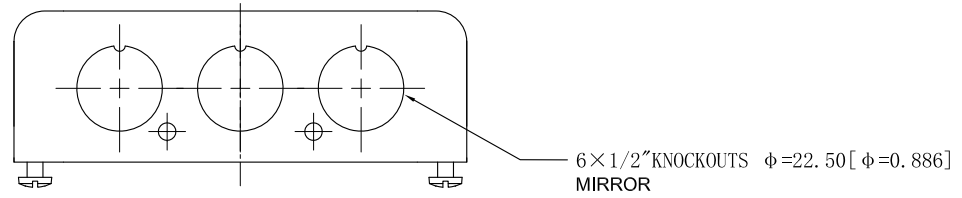
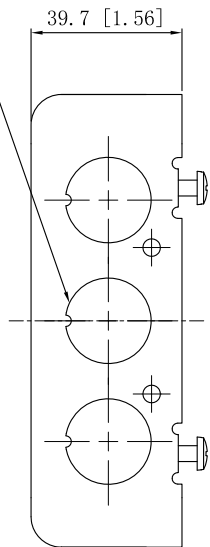


| SIDES | BOTTOM |
|---------------------------------------|------------------|
| 12 1/2" KNOCKOUTS | 2 1/2" KNOCKOUTS |
| | 2 3/4" KNOCKOUTS |
| | 1 Ground Hump |
| 2 PCS 8-32x1/2 Screws Installed | |
| Material:Steel-0.0625"-G60 Galvanized | |



6x1/2" KNOCKOUTS $\phi=22.50$ [$\phi=0.886$]
MIRROR

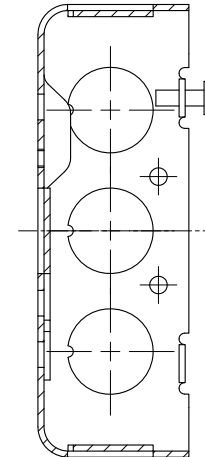
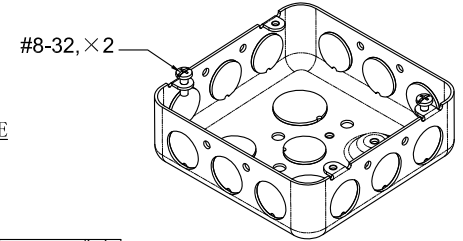
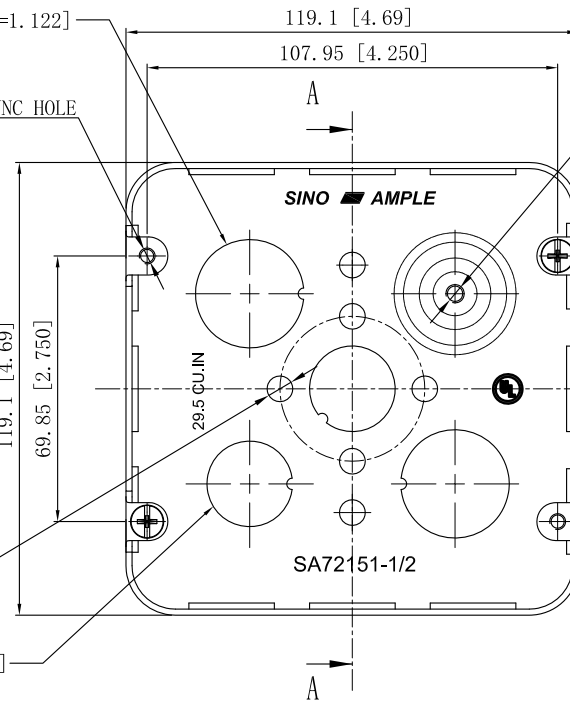


2x3/4" KNOCKOUTS $\phi=28.50$ [$\phi=1.122$]

4-#8-32 UNC HOLE

6- $\phi 6.75$ [$\phi 0.27$] HOLE

2x1/2" KNOCKOUTS $\phi=22.50$ [$\phi=0.886$]



This data sheet is for reference only. SINO AMPLE reserves the right to make changes to the design without prior notice.

| |
|-----------------------|
| DESCRIPTION |
| |
| TRADE REFERENCE TERMS |
| |

| | | | |
|------------------|--|------------------------|----------|
| STANDARD PACKING | ZHUJI SINO AMPLE METAL PRODUCTS CO., LTD. | | |
| 25 PCS | TITLE 4-11/16" SQUARE BOXS & EXTENSION RINGS (1-1/2") | | |
| | SIZE A4 | DWG NO. SA72151-1/2 | REV A |
| DATA SHEET | | | |