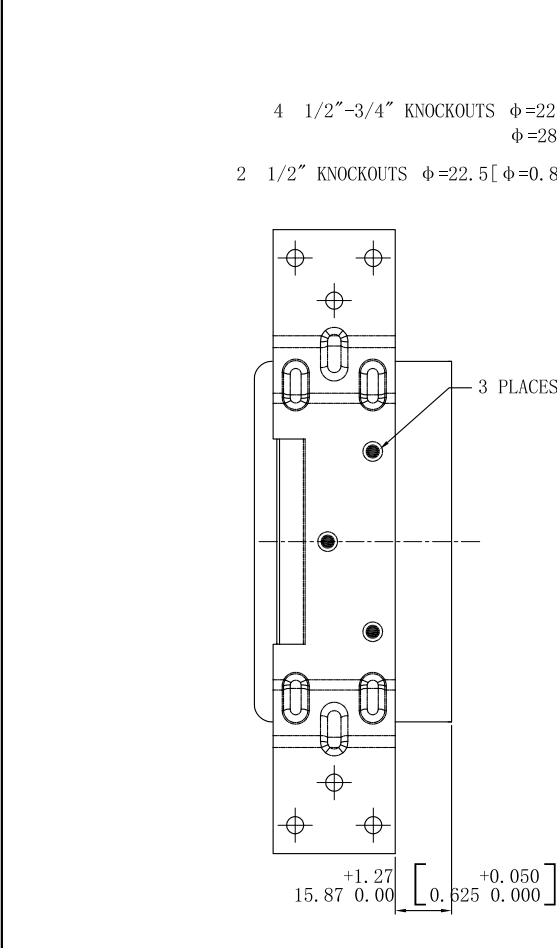


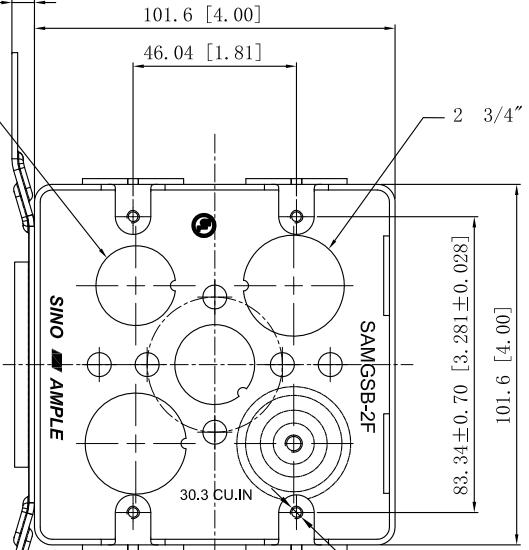
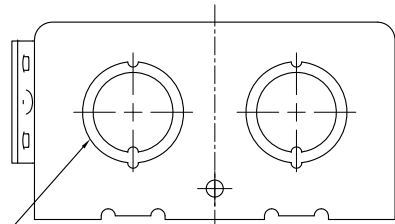
SIDES	BOTTOM
2 1/2" KNOCKOUTS	2 1/2" KNOCKOUTS
4 1/2"-3/4" MOON KNOCKOUTS	2 3/4" KNOCKOUTS
	1 Groud Hump
Material:Steel-0.0625"-G60 Galvanized	



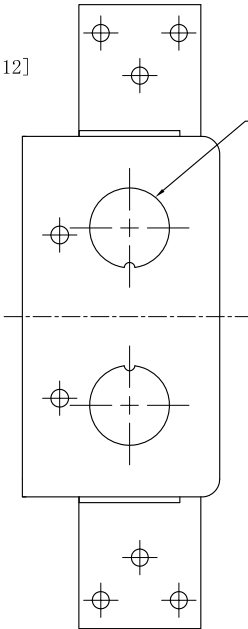
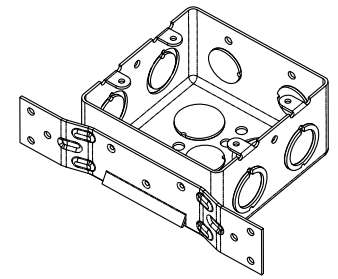
4 1/2"-3/4" KNOCKOUTS $\phi=22.5 [\phi=0.89]$
 $\phi=28.5 [\phi=1.12]$

2 1/2" KNOCKOUTS $\phi=22.5 [\phi=0.89]$

6.35 [0.25]



2 3/4" KNOCKOUTS $\phi=28.5 [\phi=1.12]$



This data sheet is for reference only . SINO AMPLE reserves the right to make changes to the design without prior notice.

DESCRIPTION
TRADE REFERENCE TERMS

STANDARD PACKING
25 PCS

ZHUJI SINO AMPLE METAL PRODUCTS CO. , LTD.		
TITLE 2-GANG SWITCH BOX 2-1/8"DEEP		
SIZE A4	DWG NO. SAMGSB-2F	REV A
DATA SHEET		